

THE IMAGINE SERIES

The Imagine

5037

24' x 56'

DIMENSIONS

1,344 sf

LIVING SPACE

3

BEDROOMS

2

BATHROOMS

OVERVIEW

Unique Living Room and Kitchen layout with factory built and covered 3 Bed + 2 Bath compact doublewide. Customize with optional factory built den to replace one bedroom in 2 + 2 configuration

Heritage Home Center

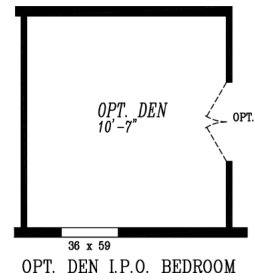
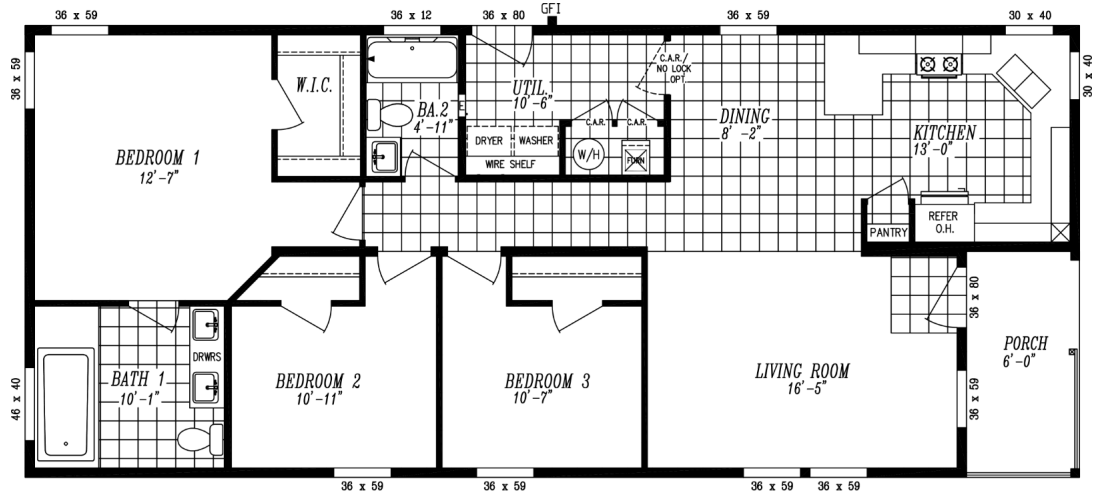
(425) 353-5464

or Request Firm Quote

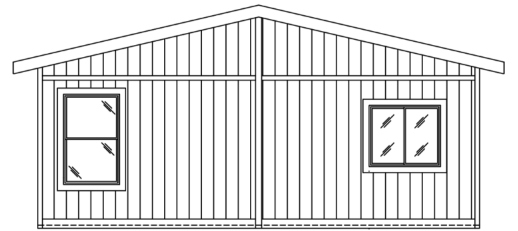
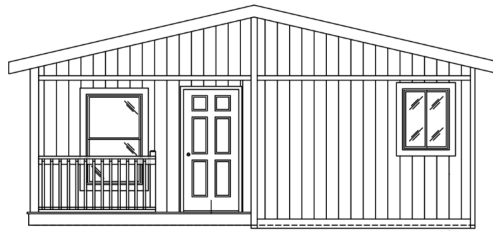
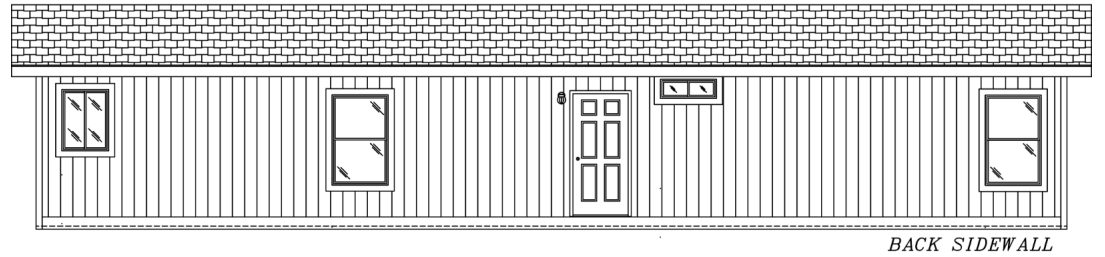
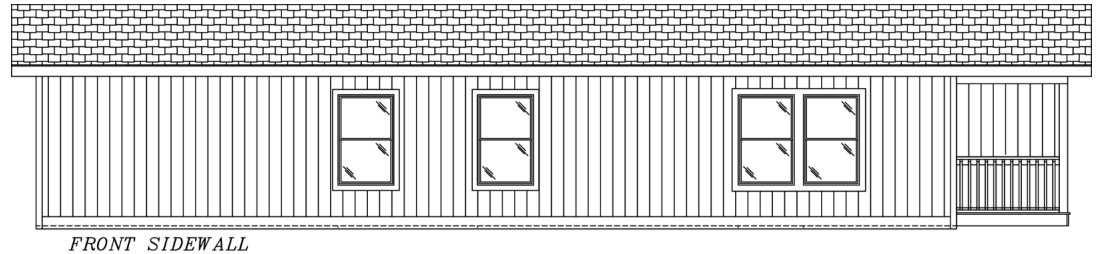
EMAIL US

01 FLOOR PLAN

1,344 SQ FT · 24' x 56'



02 FRONT ELEVATION



# The Imagine 5037

3 Bedrooms | 2 Bathrooms | 1,344 sq ft

## STANDARD FEATURES

- ✓ Energy Star Rating
- ✓ LP SmartSide Panel Siding with 5/50 Year Warranty
- ✓ Standard Deluxe Bath 1 with 6' Deck Tub and 60" Fiberglass Double Bench Seat Walk In Shower
- ✓ 2x6 Exterior Wall Studs
- ✓ Wood Cased Windows w/Flat Trim
- ✓ Rheem 50 Gallon Water Heater
- ✓ 4 Standard Can Lights in Living Room and Family Room
- ✓ Rounded Drywall Corners
- ✓ Samsung Kitchen Appliances

## MOST POPULAR UPGRADES

- ✓ 80 Lb. Roof Load for high snow areas
- ✓ Cement Board Lap Siding
- ✓ 20' Open Face Dormer
- ✓ 27.4 Side by Side Refrigerator
- ✓ Self Clean, Smooth Top Convection Range
- ✓ Above Range Microwave with Cabinets
- ✓ Energy Star Dishwasher
- ✓ 2" Blinds
- ✓ Wood Shelving in Closets and Pantries
- ✓ 8# Carpet Pad
- ✓ 9' Flat Ceiling with Enlarged Windows

**Heritage Home Center**

Washington's Price and Volume Leader

**(425) 353-5464**

CALL TO TOUR

[Request Firm Quote](#)

EMAIL US

Features/specs subject to change.